



COMPONENT
HARDWARE®

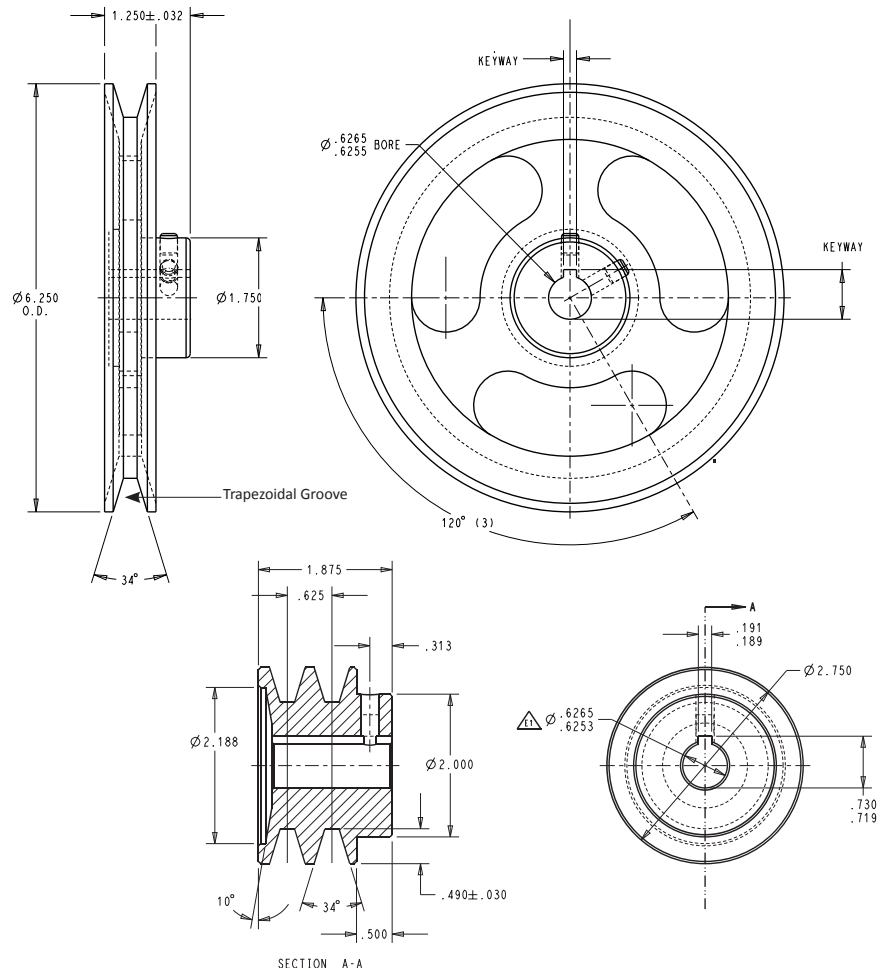
V-Belt Pulleys

Overview

V-belt pulleys are for use with V-belts to transfer motion from gear boxes and motors to belts, fans, and pumps. They have V-shaped grooves that mate with V-shaped belts to prevent misalignment and belt slippage. V-belt pulleys provide maximum friction and torque in belt drive systems for more efficient power transfer.

Features and Benefits

- Cast iron construction
- Available with various finish options – E-coat, powder coat, plated or painted per customer specification
- Can be designed for single or multiple belts
- Custom designed to specific customer requirements for diameter, bore, rim and groove widths, and keyways
- Trapezoidal groove for increased belt engagement and more efficient power transfer
- ID and keyway tolerance to ± 0.0005 "
- Pulleys can also be designed for use with flat or round belts



COMPONENT
HARDWARE®

www.componenthardware.com