



**COMPONENT**  
HARDWARE®

## *Black Compression Over Center Lever Latch*

### Overview

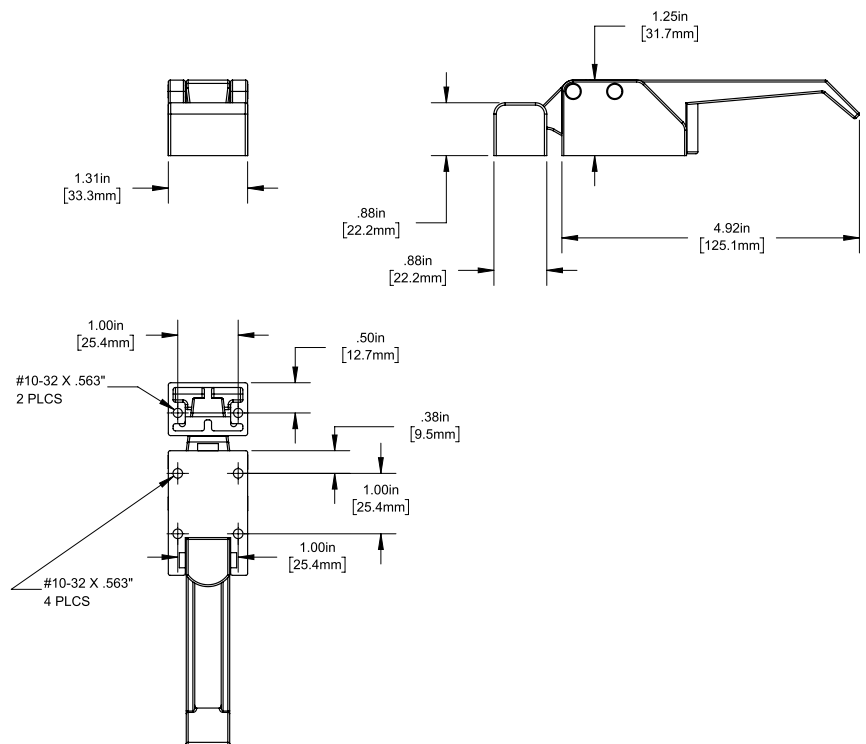
Black powder coated zinc, over center lever latch with compression spring is ideal for foodservice, medical and institutional applications

### Features and Benefits

- Die cast zinc construction with black powder coated finish provides durable corrosion resistance
- Compression spring with over center design provides secure closure to prevent accidental door opening and excellent gasket compression to dampen vibrations
- Concealed rear-mounting design is tamper resistant and provides a clean exterior appearance
- Strike included with latch
- Requires six #10-32 x 1/2" long threaded fasteners for mounting (not included)



**Model No. R31-1000-BLK**



**COMPONENT**  
HARDWARE®

[www.componenthardware.com](http://www.componenthardware.com)